

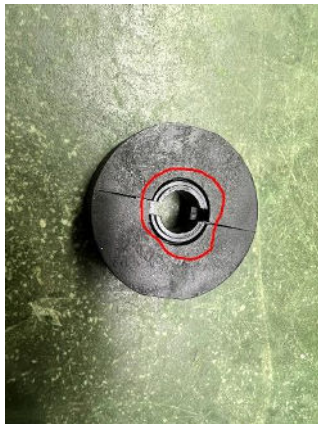
Hyper VT 2 Speed clutch shoes setup

1. Original factory setting: first clockwise to tighten the shoes' screw, then counterclockwise to loosen 6 turns. (The distance after 6 turns is about 19.6mm, as shown in the picture)



2. Same steps to both shoes and please be aware that the adjustment must turn 6 times counterclockwise to the 2 shoes.

3. After adjustment is completed, please check whether the shoes are adjusted evenly, and it needs to be concentric with the axis, as shown in the picture



4. It could be minor adjusted as per your preference after assembling on car.

Clockwise: the shoes get tightened and transmit to 2nd speed slower

Counter-clockwise: the shoes get loosen and transmit to 2nd speed faster